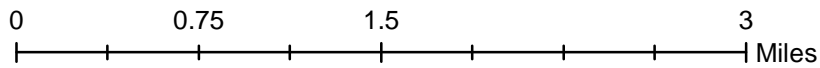
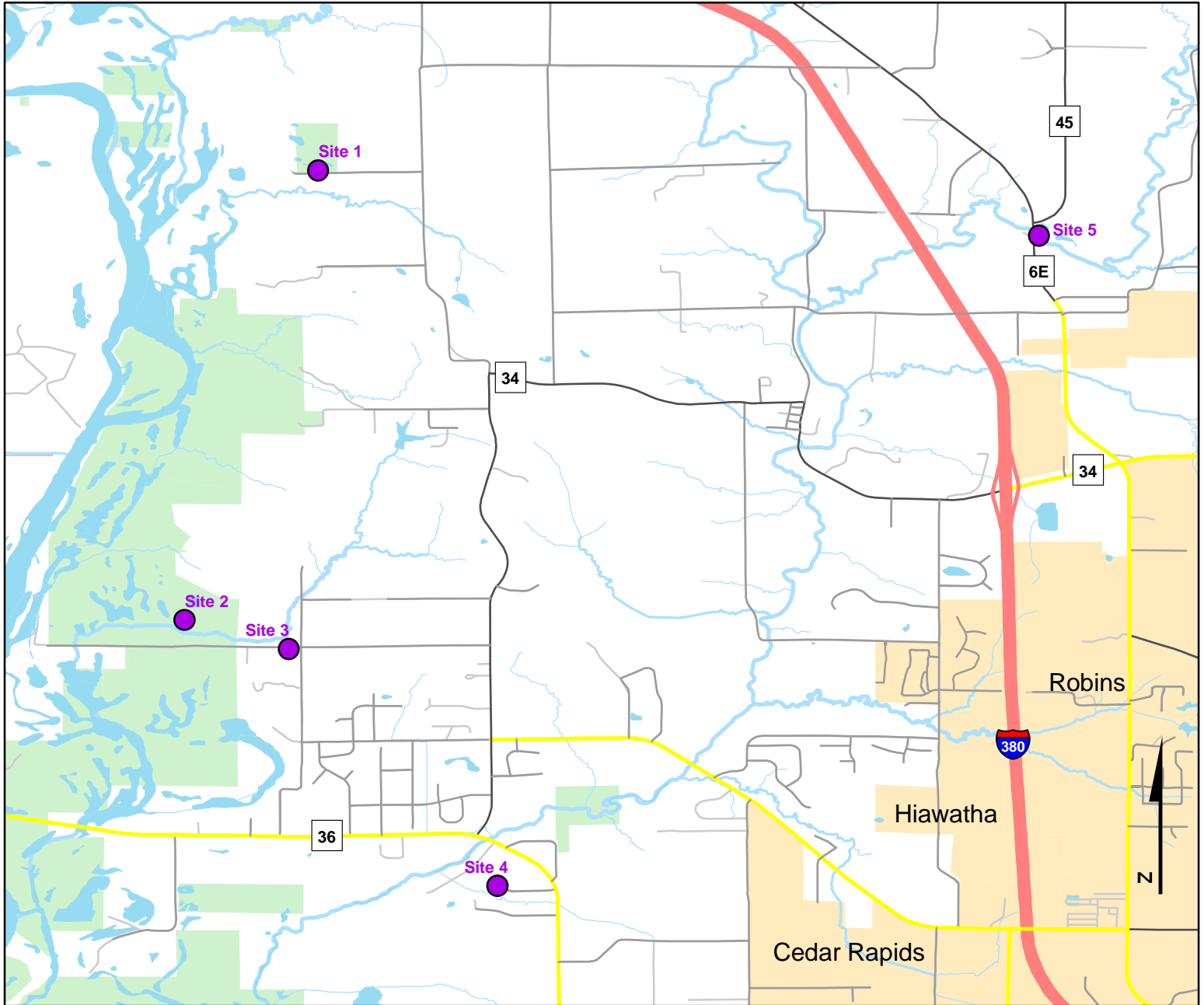




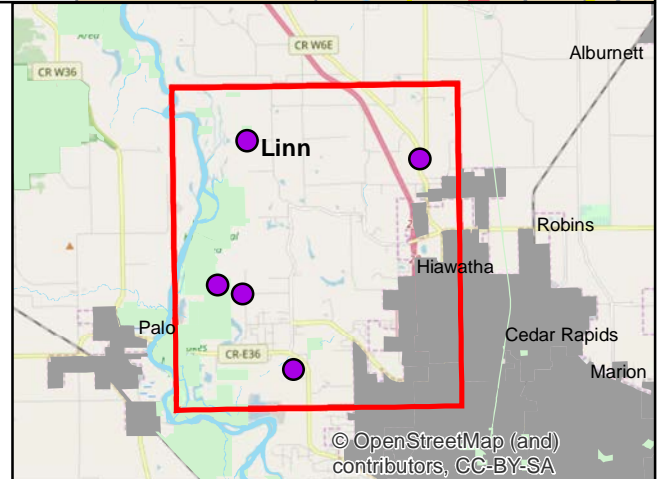
Volunteer Wildlife Monitoring Program (VWMP) Frog and Toad Survey

Route ID: 191 County: Linn

Click for Google Maps to Site 1: <https://www.google.com/maps/dir/?api=1&destination=42.1168669636,-91.7541156227>



DNR
**Volunteer
 Wildlife
 Monitoring
 Program**



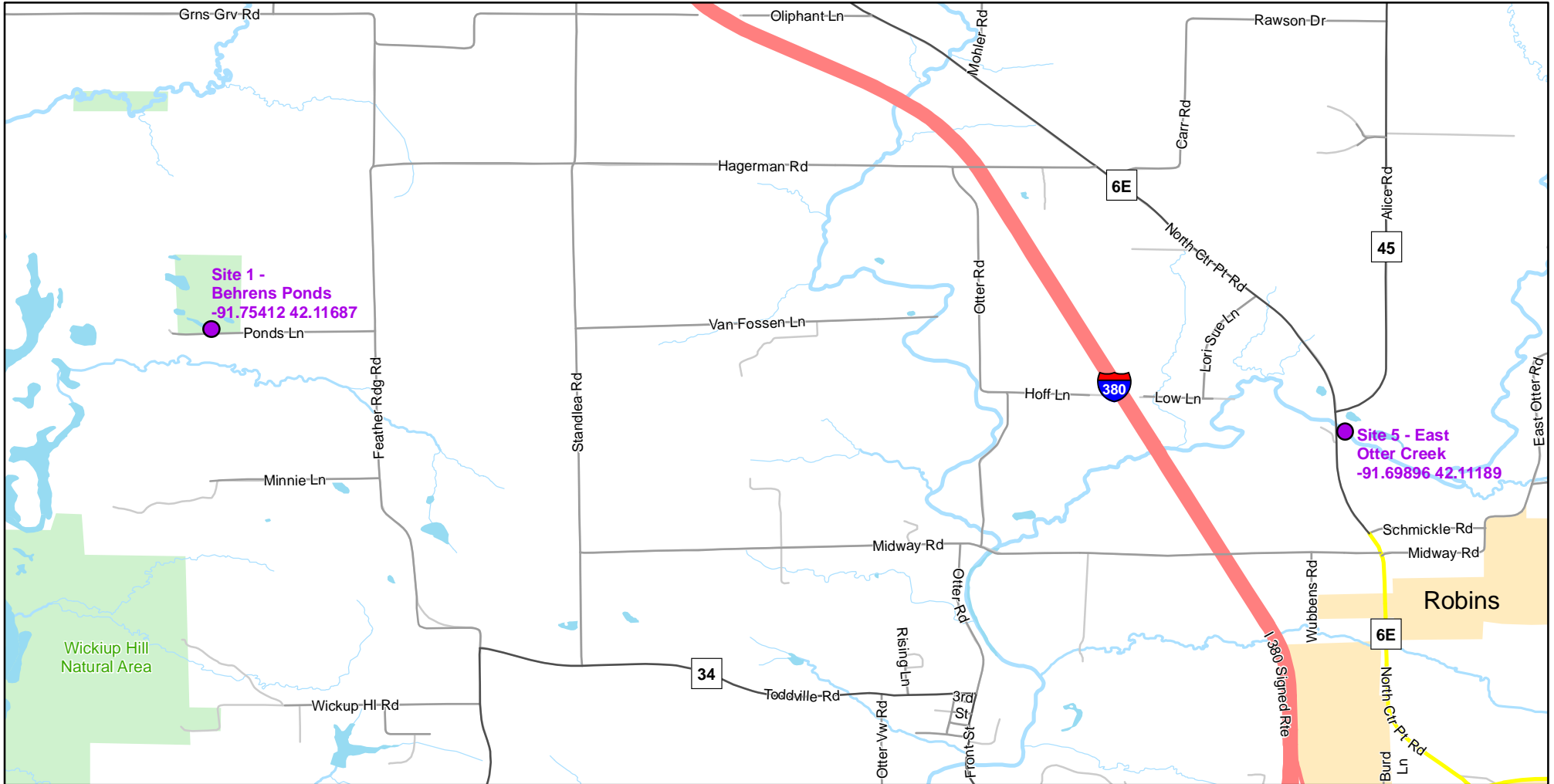
© OpenStreetMap (and) contributors, CC-BY-SA



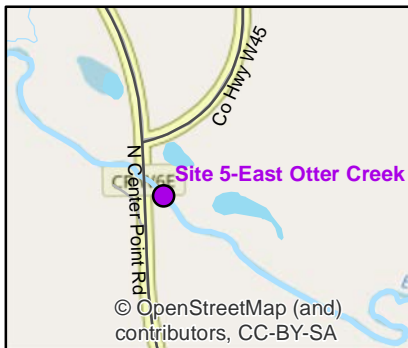
Volunteer Wildlife Monitoring Program (VWMP) Frog

Route ID: 191 County: Linn

Click for Google Maps to Site 1: <https://www.google.com/maps/dir/?api=1&destination=42.1168669636,-91.7541156227>

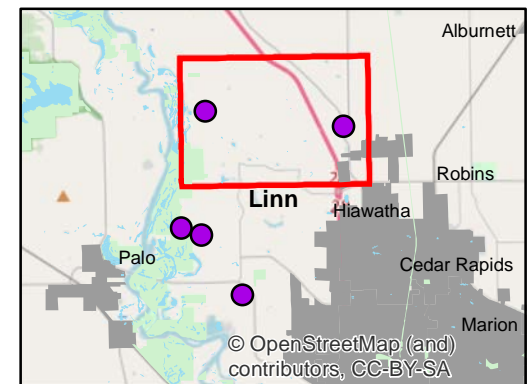
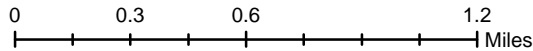


Enlarged View of Site 5



Legend

----- Trails

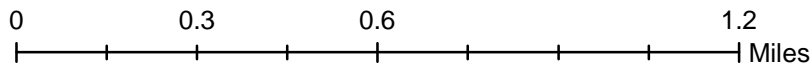
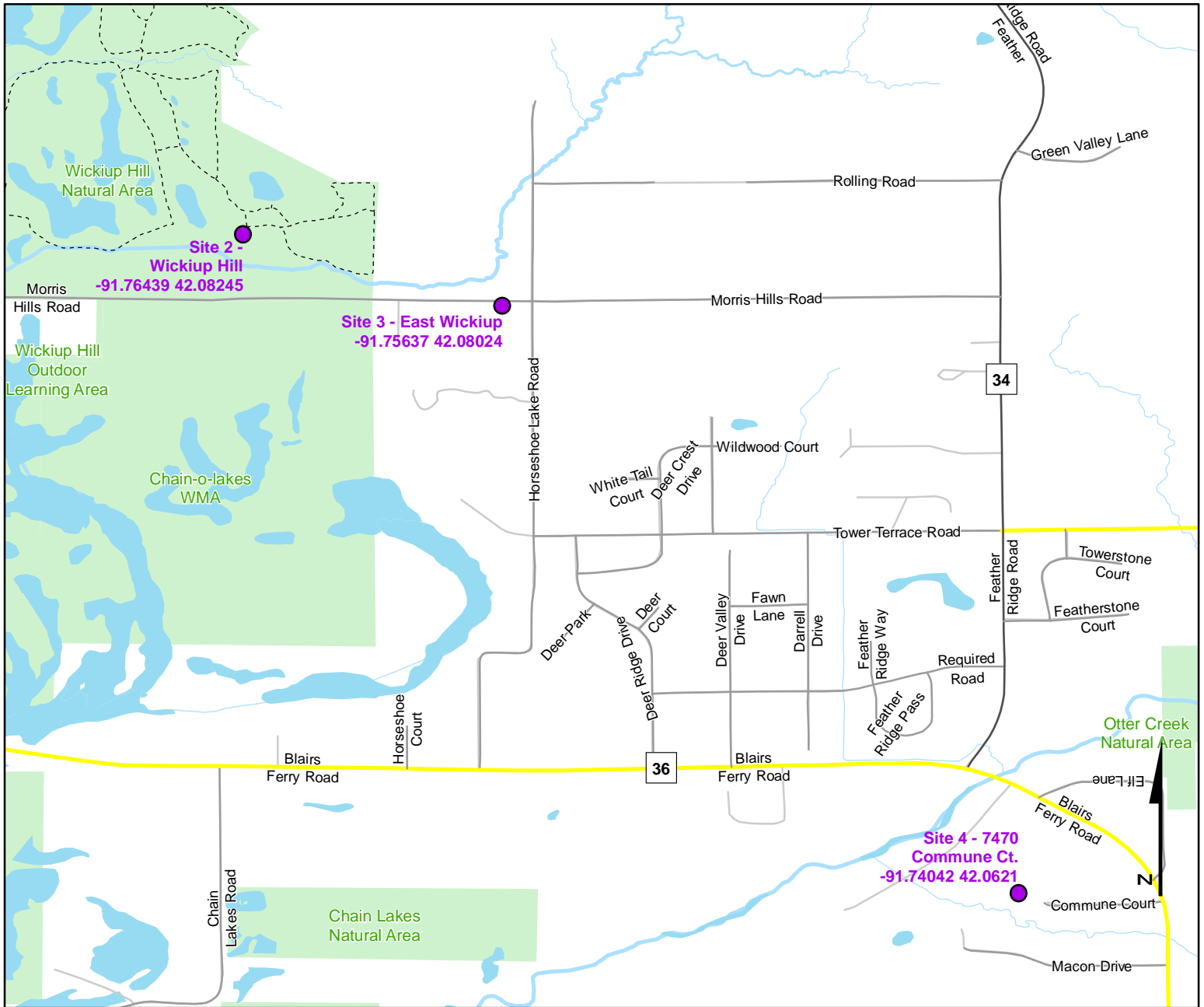




Volunteer Wildlife Monitoring Program (VWMP) Frog and Toad Survey

Route ID: 191 County: Linn

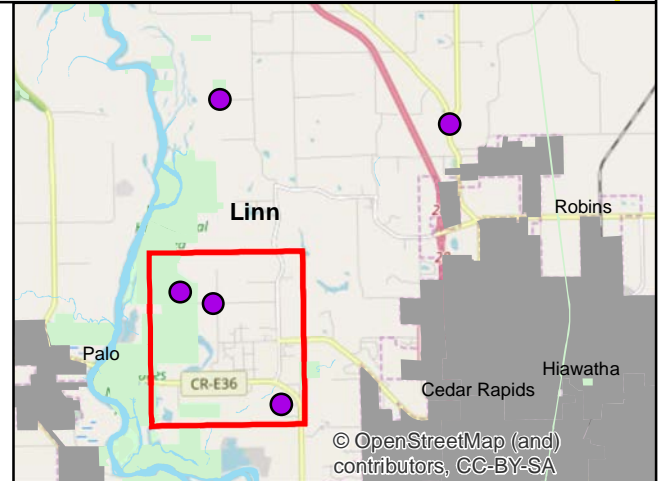
Click for Google Maps to Site 1: <https://www.google.com/maps/dir/?api=1&destination=42.1168669636,-91.7541156227>



DNR
Volunteer Wildlife Monitoring Program

Legend

----- Trails





Frog and Toad Call Survey Route Description

Route ID **191**

Established: 1998

Site Number	Name	County	Latitude	Longitude	Directions
1	Behrens Ponds	Linn	42.116867	-91.7541156	
2	Wickiup Hill	Linn	42.0824479	-91.7643888	Wickiup Outdoor learning center
3	East Wickiup	Linn	42.0802448	-91.7563678	South side of road, 1/2 mile east of Wickiup Hill Learning Center
4	7470 Commune Ct.	Linn	42.0621032	-91.7404176	
5	East Otter Creek	Linn	42.1118867	-91.6989603	South of CRW45 where it intersects with W6E (North Center Point Rd.)